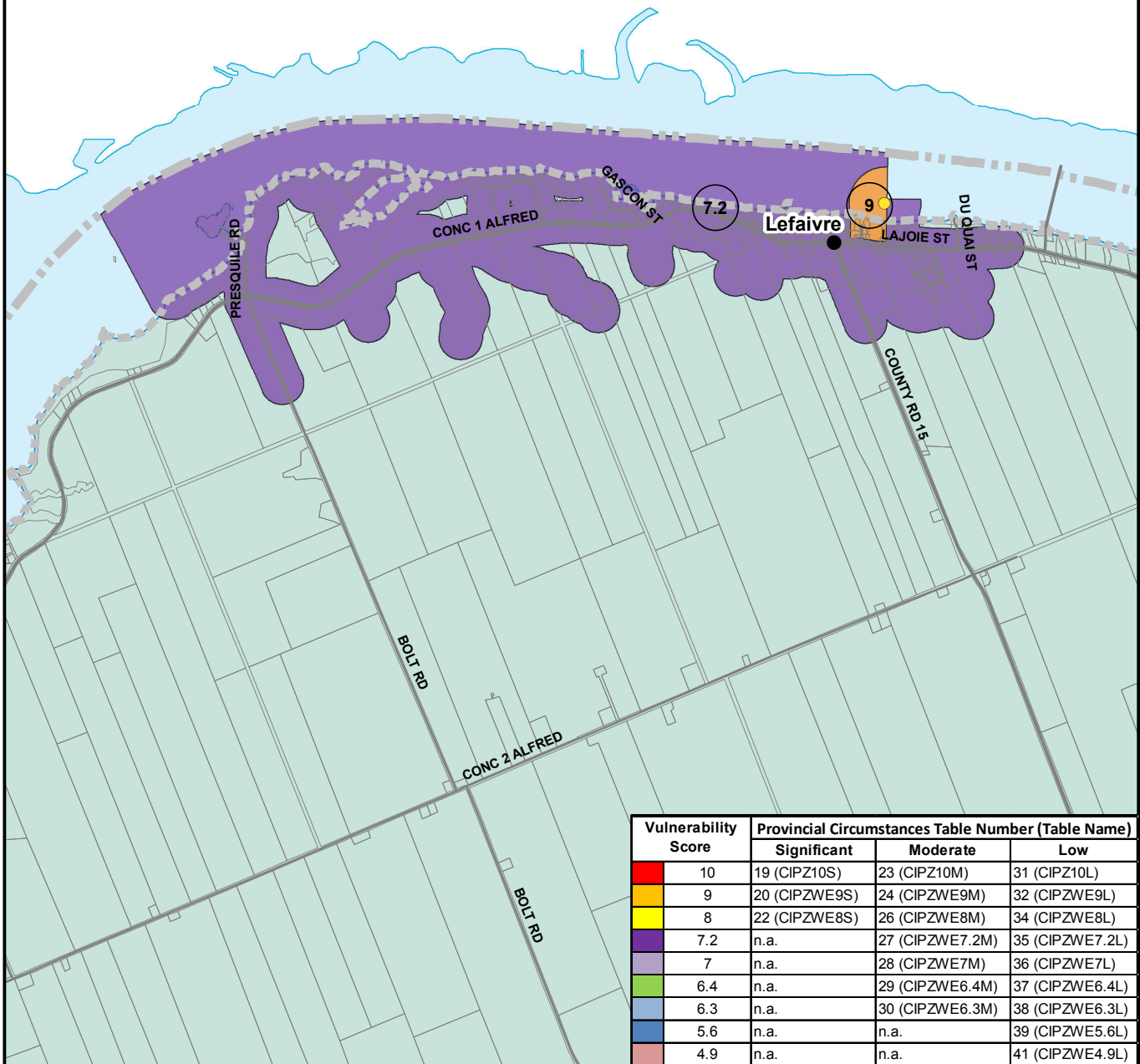
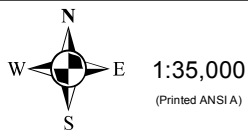


Quebec



Vulnerability Score	Provincial Circumstances Table Number (Table Name)		
	Significant	Moderate	Low
10	19 (CIPZ10S)	23 (CIPZ10M)	31 (CIPZ10L)
9	20 (CIPZWE9S)	24 (CIPZWE9M)	32 (CIPZWE9L)
8	22 (CIPZWE8S)	26 (CIPZWE8M)	34 (CIPZWE8L)
7.2	n.a.	27 (CIPZWE7.2M)	35 (CIPZWE7.2L)
7	n.a.	28 (CIPZWE7M)	36 (CIPZWE7L)
6.4	n.a.	29 (CIPZWE6.4M)	37 (CIPZWE6.4L)
6.3	n.a.	30 (CIPZWE6.3M)	38 (CIPZWE6.3L)
5.6	n.a.	n.a.	39 (CIPZWE5.6L)
4.9	n.a.	n.a.	41 (CIPZWE4.9L)



- Legend**
- Villages/Towns
 - +— Railway Tracks
 - Primary Roads
 - Secondary Roads
 - Other Roads
 - Rivers and Lakes
 - ▭ Property Boundary
 - ▭ Municipal Boundary
 - ⊕ Raisin Region SPA
 - ⊕ South Nation SPA
 - Surface Water Intake



This map is intended to accompany the Assessment Report and may be subject to change. Please consult the local Conservation Authority for the latest version and assistance with proper interpretation.

Base data is provided by the Ontario Ministry of Natural Resources. Produced by the South Nation River Conservation Authority under license.

Copyright © Queen's Printer for Ontario, 2012.

